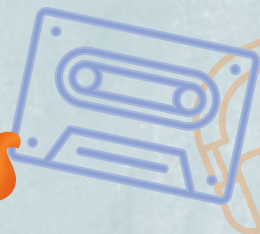




# Wayne County Libraries Greatest Hits



**1 Bethany Public Library** There is truly something for everyone at Bethany. Adult programs feature local history, author presentations, and elected officials or candidates, and a wonderful weekly story time engages pre-K children and their adult caregivers.

The music programs, like the acoustic music circle and the ukulele club, are favorites for all ages. More than 120 people from ages 7 to 70 attended a three-day, multi-generational music camp over the summer, learning new instruments and performing in a public concert.



**2 Hamlin Library** Hamlin is a place where patrons can learn, grow, and find resources for all areas of their lives. The library is preparing an exciting expansion to serve more people and offer more programs, like a new drop-in story time on Saturday mornings at 11:00 a.m. You're invited to 'check out' all the library offers!



**4 Newfoundland Area Public Library** Partnerships with local groups and businesses bring unique programs to patrons of all ages. Greene-Dreher Historical Society leads a free genealogy workshop and local business The Craft Room helps patrons recycle books into new things like decorations and handbags! The library is a write-in location for November's National Novel Writing Month (NaNoWriMo), which brings together writers of all ages. A growing selection of programs creates a community center for Newfoundland and the surrounding area.



**3 Hawley Public Library** Hawley is unique in many ways. The library offers the convenience of providing local passport services, and its displays and speakers are chosen to inform the community about important issues, like mental health, self-care, suicide prevention, and other topics. The Unique Pathways Series spotlights local individuals, tracing the twists and turns that led them to unique jobs and new places, and shaped the people they've become. This program brings the community closer by sharing unique life stories.

The Unique Pathways Series spotlights local individuals, tracing the twists and turns that led them to unique jobs and new places, and shaped the people they've become. This program brings the community closer by sharing unique life stories.



**6 Pleasant Mount Library** Pleasant Mount is like home. By connecting through the library, our community has become a family. Our patrons experience warmth, hospitality and a welcoming atmosphere at every visit and leave with a feeling of friendship and care. So many groups enjoy our meeting spaces, including homeschool families, the quilting group, our Book Club and Women of Wisdom.

**5 Northern Wayne Community Library (Lakewood)**

Lakewood is the hub of the community and support from loyal patrons and partners continues to grow. Everyone feels welcome and at home. Families visit the library to enjoy activities, or just to meet up with friends for lunch. The library extends its community-driven mission to neighbors through service projects.

This year, with the help of a local camp, the library provided backpacks to more than 40 local children.



**7 Wayne County Public Library (Honesdale)** Snug as a Bug Sunday Story Time is offered Sundays at 7 p.m. Honesdale's Children's Librarian Miss Betty cuddles up in her PJs and reads a story from her home via Facebook Live! This awesome program allows working parents, military families, grandparents and their children to enjoy a story time experience wherever they are! The program emphasizes Talk, Sing, Read, Write, and Play.



## Thank you! Please indicate any changes to your personal information.

Name:

Home Phone:

Home Address:

Email Address:

Please let us know how you'd like to receive your donation acknowledgement:

By mail to my address     By email     No acknowledgement needed

May we acknowledge you as a donor in a newsletter or press release?

Yes, I hope to inspire others to give!     No, I prefer my donation be anonymous.



Dear <<Library Supporter Name>>,

Lately, I've been thinking a lot about change. Through the years, there are changes in people we know, what we support and what is meaningful to us. There are also changes in technology. Think about your music collection. In mine, I found old records, eight track tapes, cassette tapes, a Walkman, CDs, and an iPod Nano to download music. Music is the soundtrack to life and life is a never-ending series of change. Some of it is easy listening and some of it is hard rock. Similar to how we modulate the intensity of our music, we vary our approach to deal with life's changes.

Library staff constantly "adjust the volume" so that they can move forward with the variations in technology, programming, and resources that communities need. With private donations making up about 49% of local library budgets, that means making tough choices. Working together, under the umbrella of the Wayne Library Alliance (WLA), your libraries can accomplish more together but maintain their unique independence in your local community.

This year, the WLA embraced a big change – a new catalog system, which is in use in many parts of Pennsylvania and across the country. The system makes sharing resources easier and far more affordable, giving you access to more materials than ever before. As always, we are adapting to needed tempo changes.

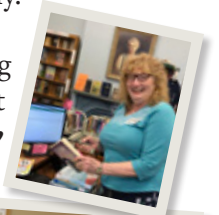
This year, the state took a step in the right direction by allocating a bit more funding to PA libraries. It helps, but it doesn't restore the 30% cut in operating funds we experienced in 2009 and it certainly doesn't bring us up to 2019 standards. Technology, resources and staffing costs continue to rise, but the state is like an old jukebox stuck on the same song. So we adjust the volume... and we turn to you.

We count on you to invest in our libraries to help create their perfect pitch. Each year, you recognize that we are doing a great job in the community through programs, outreach to schools, assistance with job seeking and technology. You help us produce a flawless melody, so we can get back to doing the one thing we will always do - help people. That is what we will always do, through all the variations life throws at us.

Your change can create change and your bills can create thrills. All it takes is your desire to dance to a library theme song. Your donation to the WLA and/or its member libraries helps create a community-wide symphony. Donate to one, a few, or all via the WLA. Libraries have been here for the people of Wayne County from the time of records, to eight tracks, to digital streaming and we want to be here for the next dynamic thing a young patron dreams up. Your support will help us compose next year's community opus. For inspiration, check out some of the amazing things that have been happening at your local library this year with the **Wayne Library Alliance's Greatest Hits**. Thank you for being an agent of positive change!

Sincerely,

Tracy L Schwarz, WLA System Administrator



**The WLA Board:** Pat Nelson (Bethany Library), George Waters (Hamlin Library), Amanda Schmalzle (Hawley Library), Bev Kulikowski (Lakewood Library), Christine Piazzi (Newfoundland Library), Lew Kelly (Pleasant Mount Library), and Mikki Uzupes (Wayne County Public Library, aka Honesdale)

920-012

Over ⇨

Please accept my gift in the amount of:

- \$500     \$250     \$100     \$50
- \$25     \$10     Other

Detach and return lower portion in envelope provided

Please verify your address and other contact information on the reverse side.

If you would like to designate your contribution to benefit one or more libraries and/or the Technology Fund, please indicate the amount(s) by library / fund:

Bethany \$ \_\_\_\_\_ Hamlin \$ \_\_\_\_\_ Hawley \$ \_\_\_\_\_ Honesdale \$ \_\_\_\_\_  
Lakewood \$ \_\_\_\_\_ Newfoundland \$ \_\_\_\_\_ Pleasant Mount \$ \_\_\_\_\_ Technology Fund \$ \_\_\_\_\_

(Note: If no designation, donations will be used for countywide services)

Checks should be made payable to the "Wayne Library Alliance"

**Countywide Library Appeal**  
PO Box 269  
Honesdale, PA 18431-0269

The official registration and financial information of Wayne Library Authority dba Wayne Library Alliance may be obtained from the Pennsylvania Department of State by calling toll-free, within Pennsylvania, 1-800-732-0999. Registration does not imply endorsement.